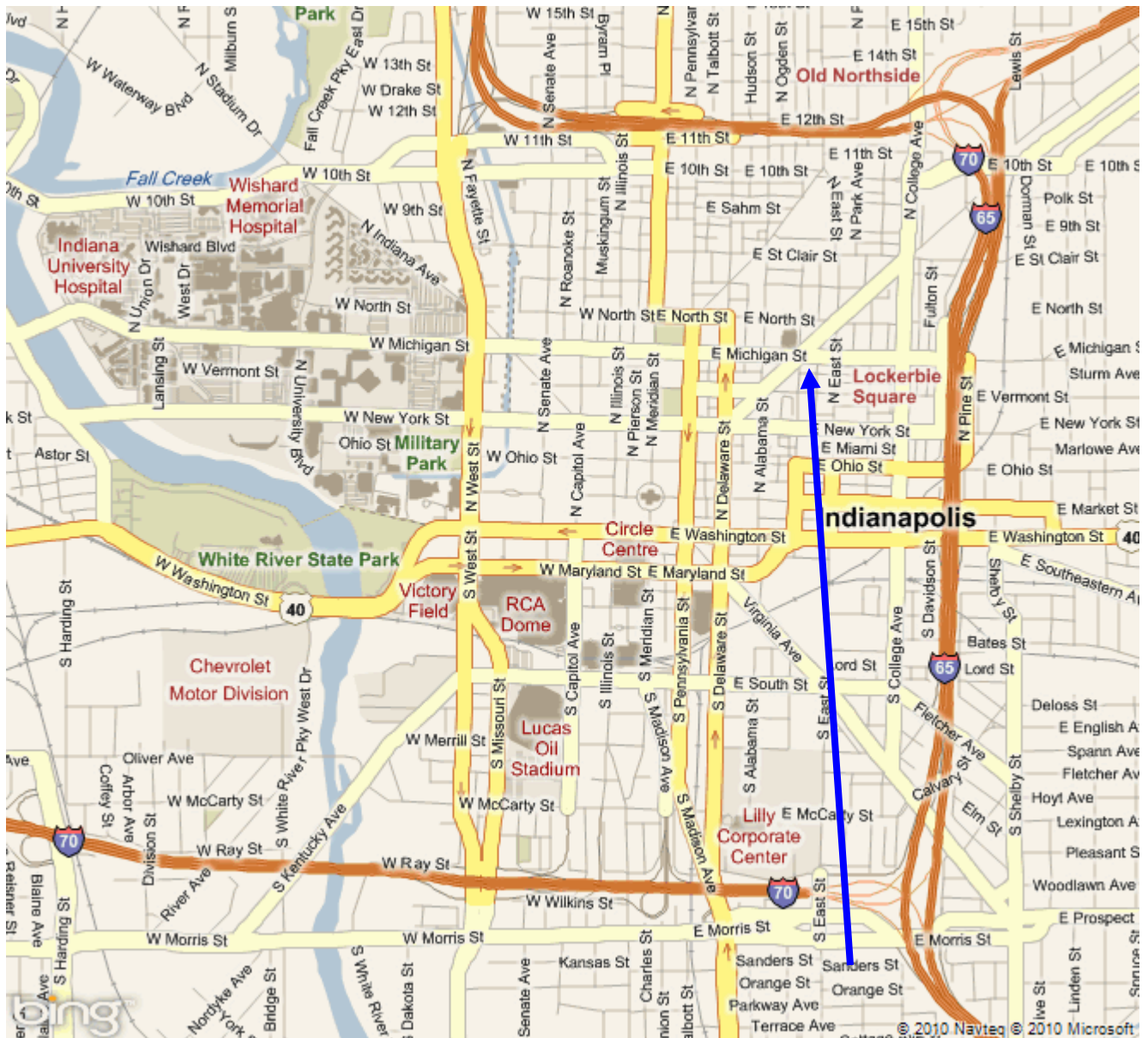


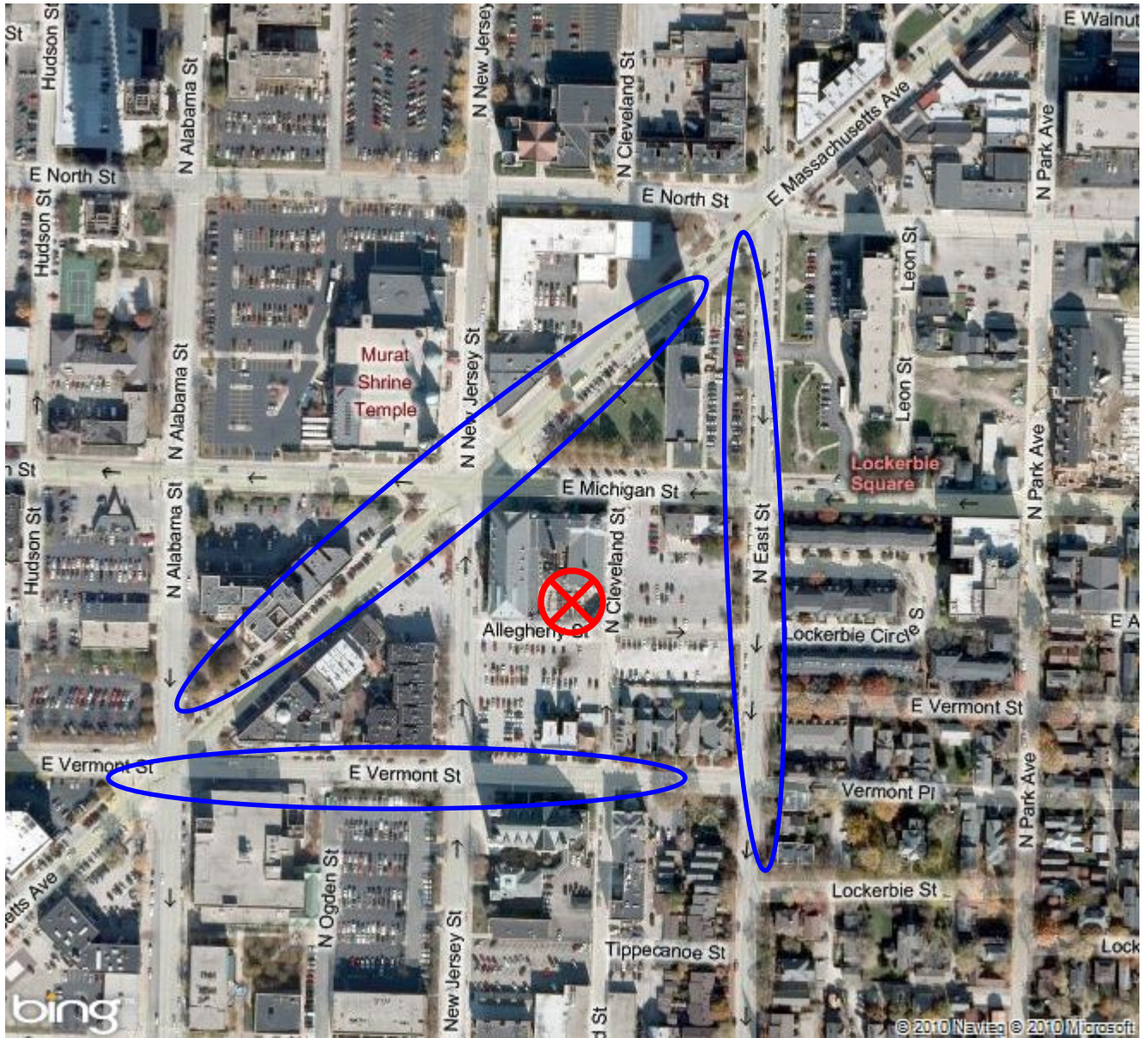
The 2010 Planet Adventure Urban Sprint RACE UPDATE

Start Location - Rathskeller Restaurant (outdoor seating area).

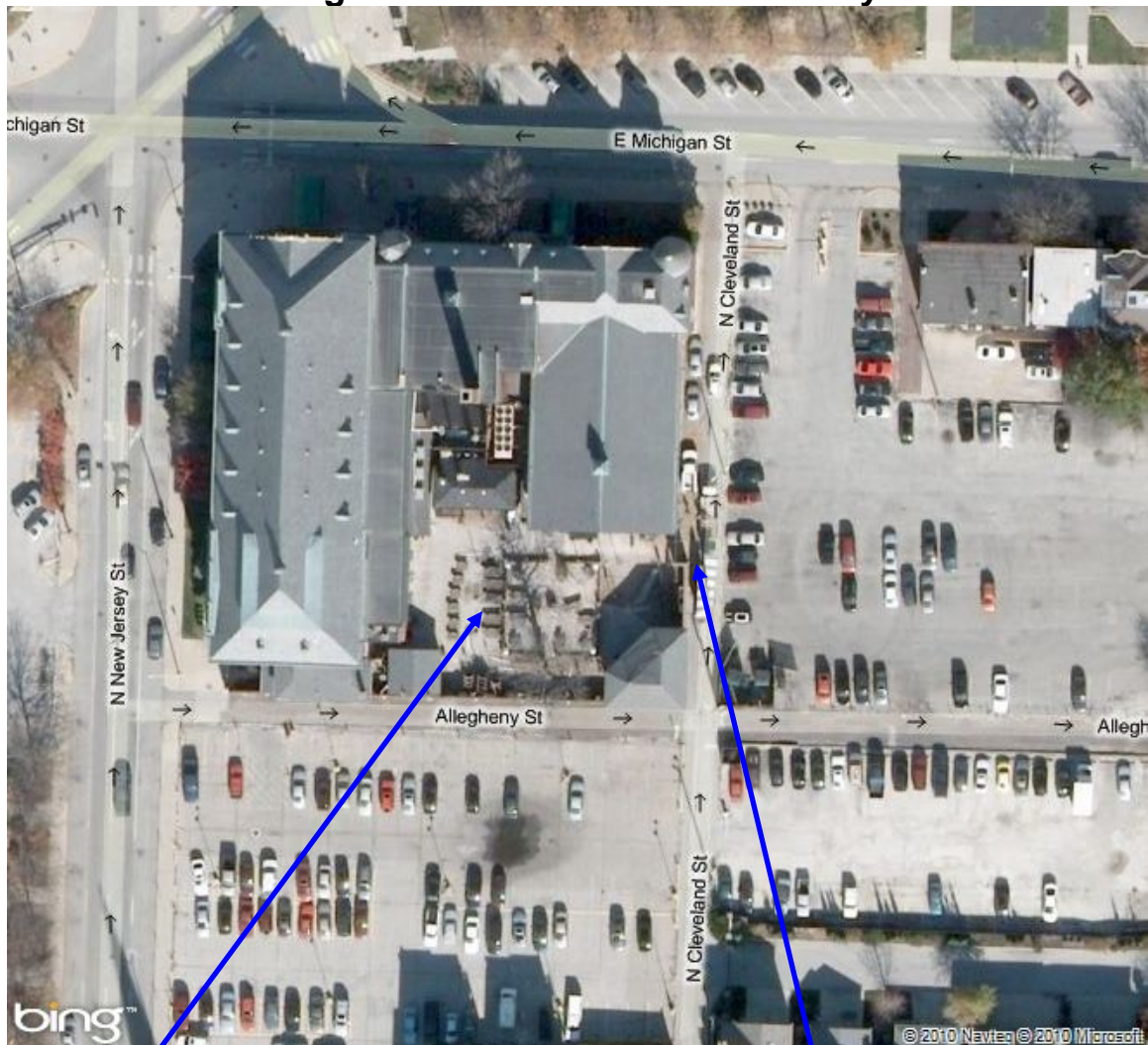
**401 E Michigan St
Indianapolis, IN 46204-1643**



PARKING: Street parking is free on the weekends. You may park for free at any parking metered spot. I've noted the closer spots with the blue ovals. There are plenty of spaces available within easy walking distance of the Rathskeller. Parking in nearby lots should be done at your own risk - for potential towing.



The entrance to the outdoor seating area is located on the East side of the building. It will be marked on race day.



Transition Area

Entrance to TA location.

EQUIPMENT UPDATES and REMINDERS

The gear list has been updated - please make sure you have the following:

- a LOCKING carabineer - one per person
- a harness - one per person
- an ATC or figure 8 - one per person

- a daisy chain or runner - one per team
- a writing utensil - suggest a Sharpie or pen
- a valid ID is advised for each person

VERY IMPORTANT! Please read!

The climbing gear requirements have changed! We previously indicated only one person on each team needed the climbing gear, that is no longer true.

If you are racing to be competitive and to place as high as possible, **EACH** team member should have a harness, carabineer and ATC (or figure 8).

If you are out for the experience and aren't as concerned about placement, we will have gear for you to borrow. However, you will move MUCH faster if you have your own gear.

Regarding the daisy chain/runner you only need one per team. If you do not have a daisy chain or runner and a carabineer, we will have these items for you to borrow.

However, just as the climbing gear requirements above, if you are racing to be competitive and place as high as possible, you should bring your own equipment as you may move faster, i.e. teams with their own daisy chain/runner and carabineer will be allowed to go ahead of teams waiting to borrow equipment.

Race Schedule

Pre-Race Check-In: Pre-race check-in will be at the race start on Saturday, August 7th at **7:00 am**. All team members must be present to sign waivers, pick-up packet, etc.... Initial maps will be distributed at this time.

Race Start Time: The 2010 Planet Adventure Urban Sprint Race will start at **8:15 AM**. Please be on time. Pre-race briefing will start at **7:45 AM**. This is very IMPORTANT! Race course details will be given at this time.

All racers need to start arriving to the start line, located just outside the outdoor seating area, at 8:05 AM for final race instructions.

Race cut-off: will be **2:15PM**. We want as many teams to finish as possible. Be aware, as in the past, **teams arriving after the 2:15 PM cut-off will be penalized by losing a checkpoint for each minute late.**

Post-Race Food: Each racer will receive a \$10 voucher toward food and beverage at the Rathskeller. This will allow teams to eat as they finish. Vouchers will be handed out during registration. Simply turn in the voucher upon receiving your bill.

Other Information

Weather: Currently the forecast calls for sunny skies and the low 80's.

Paddles and PFD's: We have paddles and PFD's for teams to rent. You should have indicated this on your registration. If you have your own, we'll be transporting them prior to the race. We'll have an area where you can drop your paddling gear (PFDs and paddles only).